

ARCHIER —



Prefab by Archier

Cabin A

Introduction.

At Archier, we are on a mission to transform the way buildings are designed and constructed, making the process more efficient, cost-effective, and sustainable.

Introducing Cabin A: our A-Frame cabin. Cabin A is a flexible, scalable and efficient cabin measuring under 60m² designed and built in Melbourne by Archier & Candour.

Prefab by Archier is our response to an escalating and unpredictable construction market, and was born out of a desire to make great design accessible to more people.

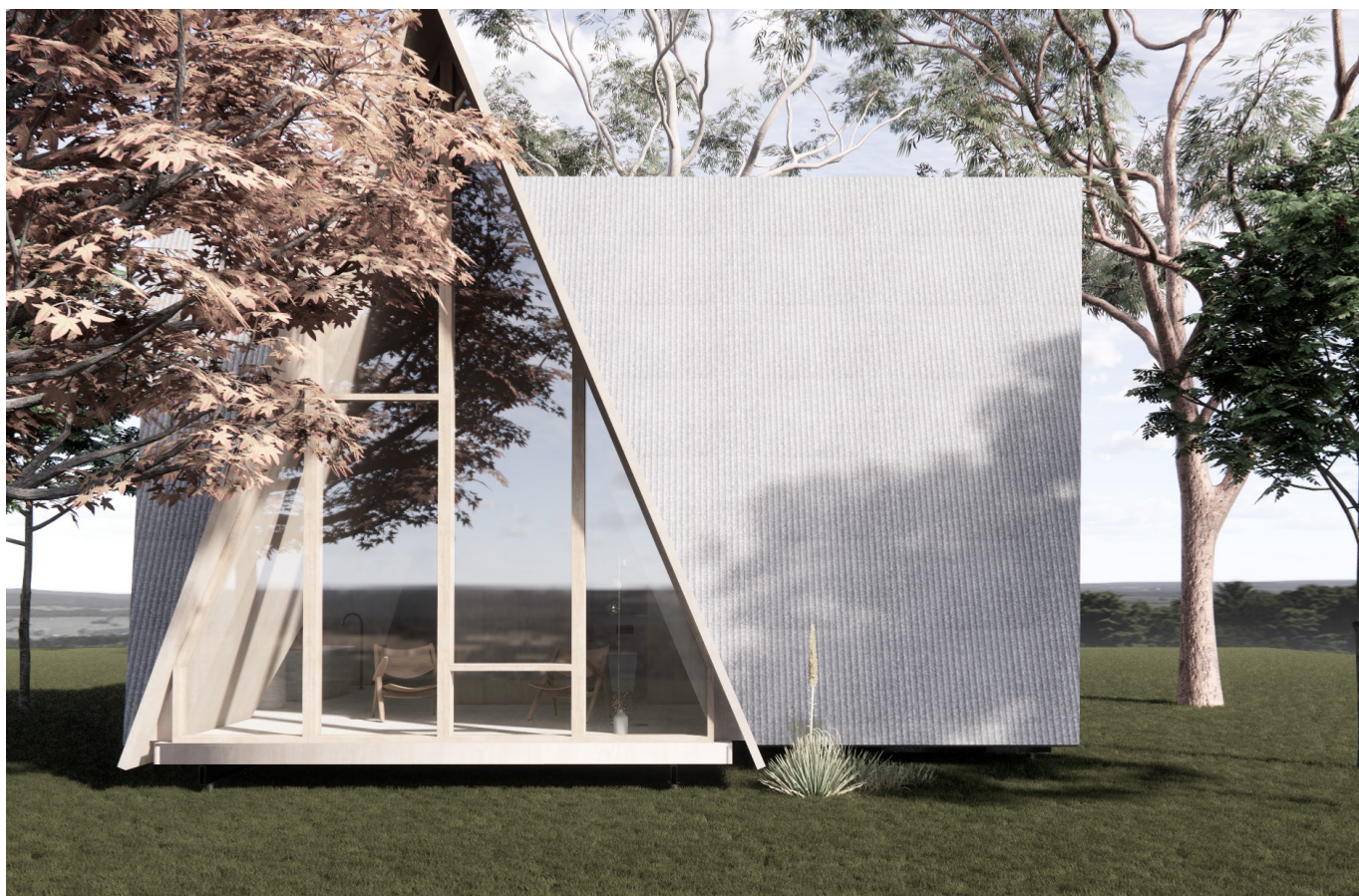
These projects are designed with prefabricated manufacturing processes in mind, revolutionising the design and construction of homes by delivering substantial time savings. From a controlled factory setting, our off-site manufacturing model works to minimise on-site work and introduces efficiencies that significantly benefit the building process.

Prefab by Archier houses also offer the highest environmental performance, ensuring that your home reduces post-occupancy power consumption, remains cool during summer and retains heat in the winter.

Cabin A by Archier offers a unique luxury in a small footprint and delivers exceptional spatial quality, with speed and cost transparency.

ARCHIER —

Exterior view showing the metal roof sheeting that references the farm shed venacular.



Key Benefits to the Cabin



View from bedroom to bathing area.

- **Speed**

Architecture delivered by an award winning practice in a fraction of the usual time.

- **Performance**

Our world class Passive Haus certified facade system allows prefab by Archier to have floor-to-ceiling glass, the facades are thermally broken and can accommodate triple glazing.

- **Sustainability**

We use local timber sourced from PEFC-certified, regrowth forests. Offers a reduction in steel without compromising structural integrity. Offsite manufacturing and assembly further reduce the significant waste of traditional onsite construction.

- **Elegance**

Championing timber, our system exposes and embraces the beauty of and within the structure.

- **Unrivalled design**

Highly orchestrated spatial configuration that creates clerestory lighting, double height space, warm timber interiors, excellent internal planning for kitchen & dining experiences, spaces designed for all times of the day to follow the sun, and a fully airtight, sustainable building approach that sits comfortably in nature.

- **Enhanced project predictability**

Better management of project schedules and budgets through a streamlined, predictable construction process that is intuitive to follow.

ARCHIER —



View through bedroom out to landscape through large window.

Option 1

Starting at \$505,000+GST**

44m2 Internal Floor Area + 11sqm Deck

- **1 bedroom**
- **Ensuite**
- **Separate Shower**
- **Bathtub**
- **Kitchen / Dining**
- **Deck**

Collaboration with top luxury product designers:

- Cabin A is designed in collaboration with some of the best product designers internationally, with luxury brands that are leading the field tying into the design in a holistic manner.

Enhancing Manufacturer Efficiency:

- By improving visibility in the manufacturing pipeline, the project enables manufacturers to optimise their scheduling and resource allocation. This leads to more informed decisions regarding capacity improvements.

Optimising Design and Procurement Processes:

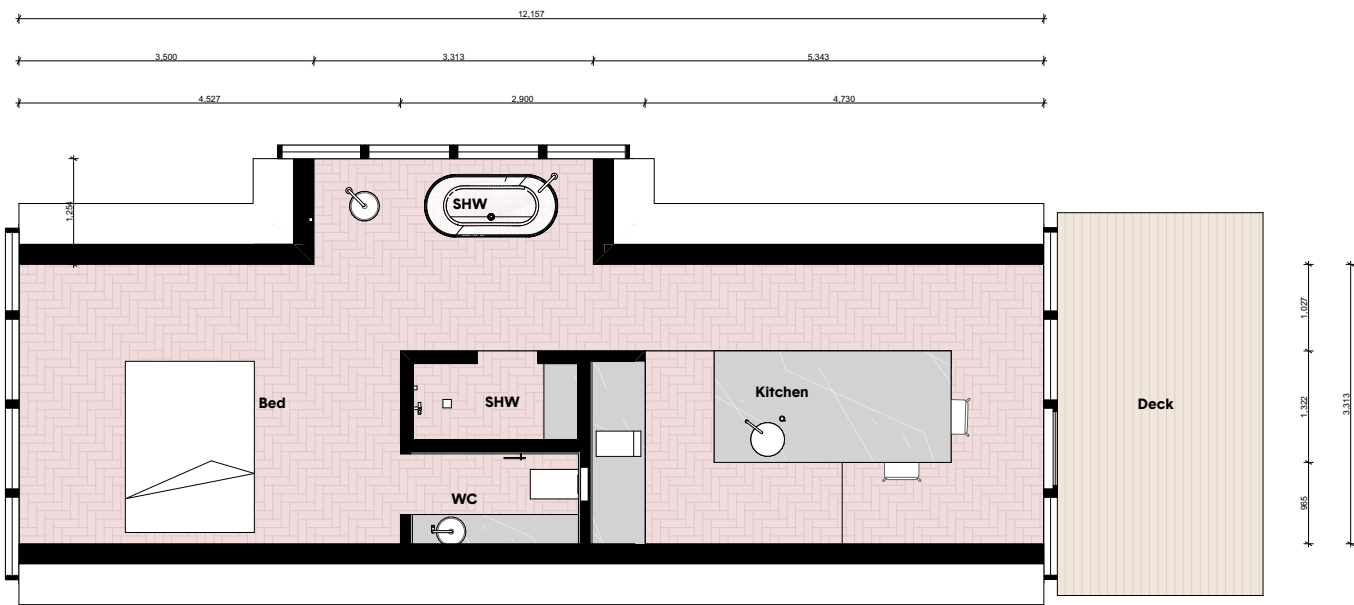
- We aim to improve design and procurement efficiencies by leveraging technology. This involves integrating information systems to eliminate redundant steps and transaction costs, further streamlining the building process and reducing the overall environmental footprint.

Contribution to Sustainable Building Practices:

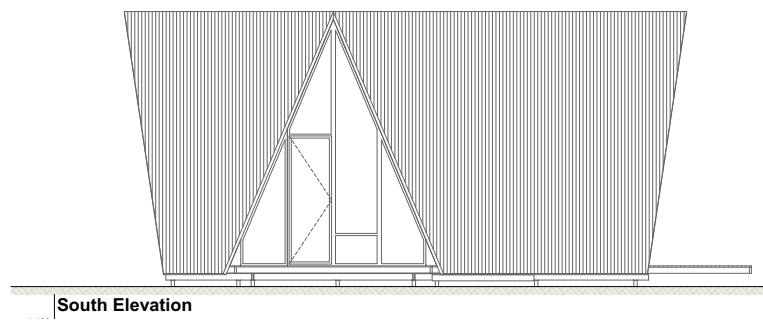
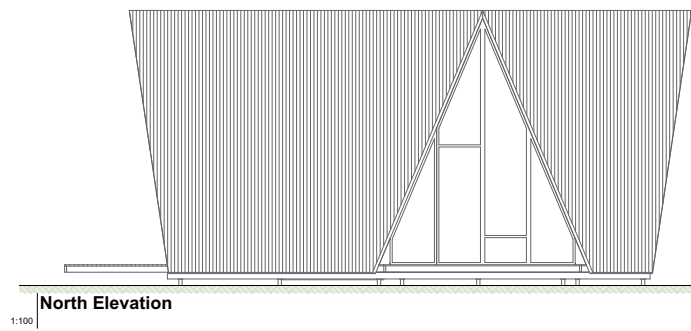
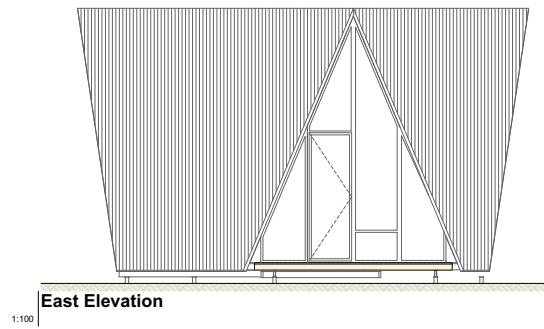
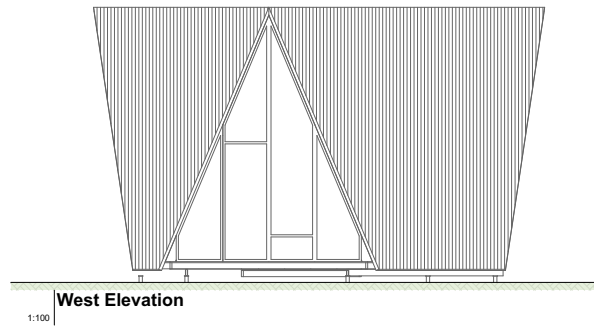
- The culmination of these efforts is a significant stride towards reducing waste and greenhouse gas emissions in the construction process, thus contributing to a more sustainable and responsible building industry. gy behind our tool's development and deployment.

***Final pricing to be determined by Contractor*

ARCHIER —



Option 1



ARCHIER —



View from bedroom to bathing area.

Option 2

Starting at \$565,000+ GST**

51m², + 11m² Deck

- **1 bedroom**
- **Ensuite**
- **Separate Shower**
- **Bathtub**
- **Kitchen / Dining**
- **Lounge**
- **Deck**

Collaboration with top luxury product designers:

- Cabin A is designed in collaboration with some of the best product designers internationally, with luxury brands that are leading the field tying into the design in a holistic manner.

Enhancing Manufacturer Efficiency:

- By improving visibility in the manufacturing pipeline, the project enables manufacturers to optimise their scheduling and resource allocation. This leads to more informed decisions regarding capacity improvements.

Optimising Design and Procurement Processes:

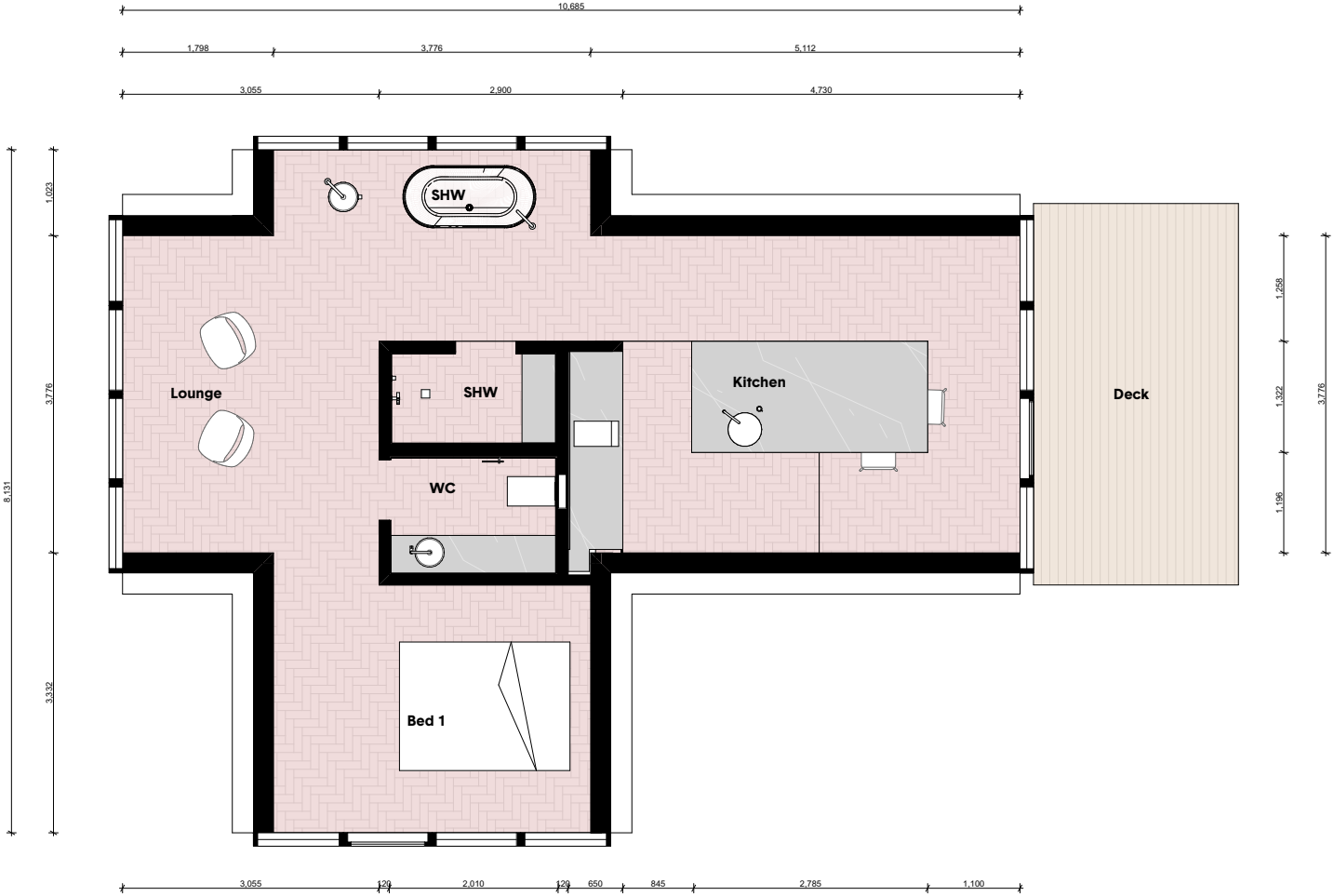
- We aim to improve design and procurement efficiencies by leveraging technology. This involves integrating information systems to eliminate redundant steps and transaction costs, further streamlining the building process and reducing the overall environmental footprint.

Contribution to Sustainable Building Practices:

- The culmination of these efforts is a significant stride towards reducing waste and greenhouse gas emissions in the construction process, thus contributing to a more sustainable and responsible building industry. gy behind our tool's development and deployment.

***Final pricing to be determined by Contractor*

ARCHIER —

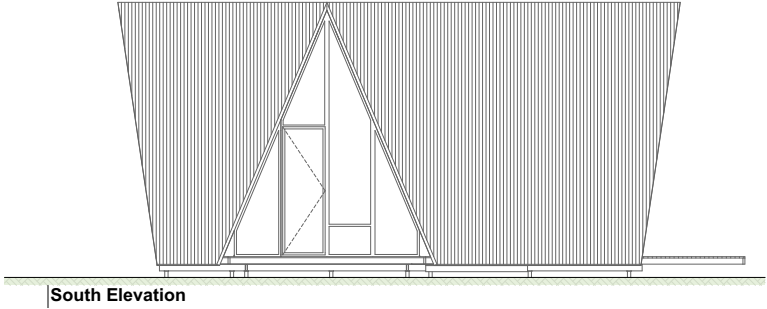
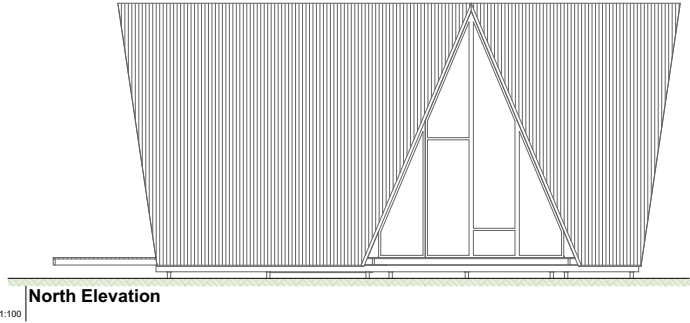
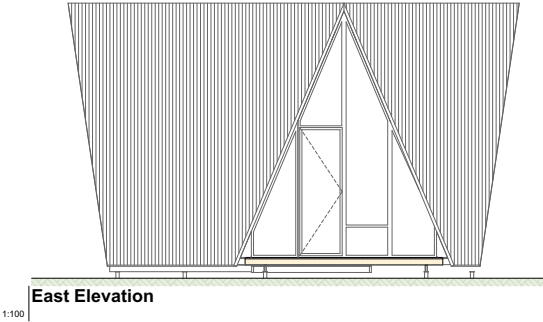
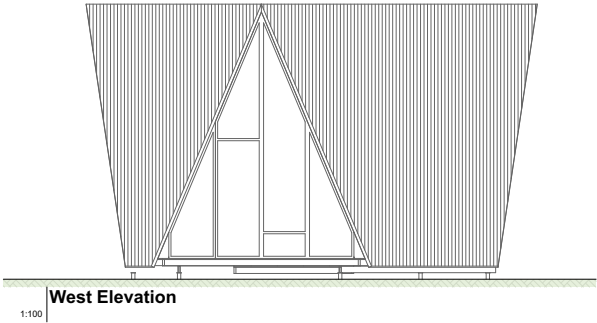


Option 2



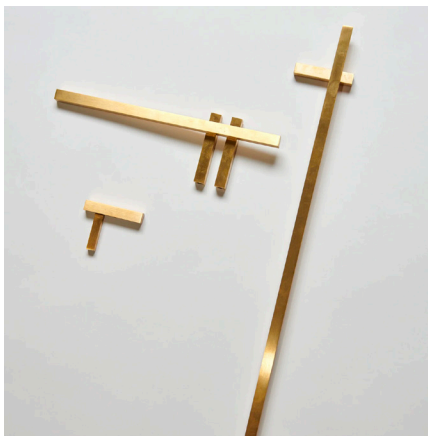
View towards seating nook from bathing area.

ARCHIER —



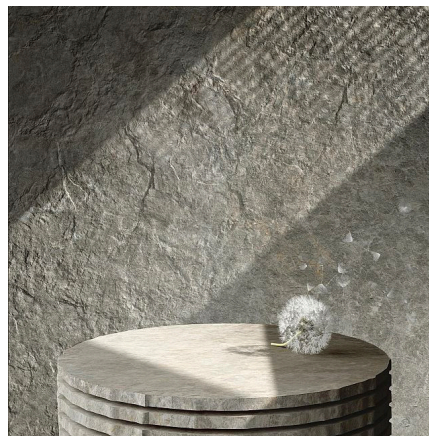
Fixtures, Finishes & Equipment

Archier's Cabin A includes leading products and materials, from carefully selected Italian marble, integrated appliances and aged brass fittings.



Archier Products

Archier's own fittings and fixtures range that complements the architecture. These include toilet roll holders, towel rails, robe hooks, roll storage, etc.



Artedomus

Artedomus is the leading supplier of high quality stone, who have worked together with Archier on numerous projects and complement the palette of exterior & interior.



Astra Walker

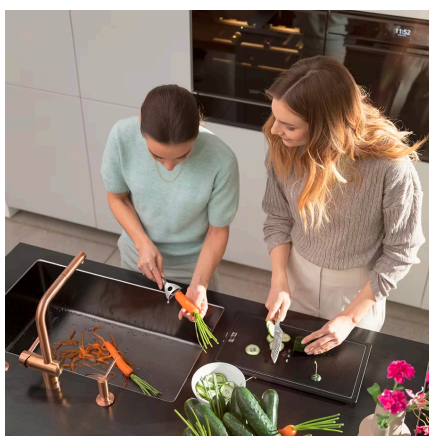
Local Australian manufacturing, that has an emphasis on quality and reliability. The aged brass features pair well with Archier's homely timber aesthetic.

ARCHIER —



Fisher Paykel

The kitchen appliances are designed by award winning luxury home appliance brand Fisher & Paykel, with integrated fridges, dish-drawers and electric burners.



Franke

Tried and tested kitchen sinks by Franke, that combine engineering, technology, and functional aesthetics that makes a more efficient, more sustainable and more beautiful kitchen.



Steico

The cabin is protected by this game changing insulation, made from waste wood fibre, that is wholly sustainable.

FAQ.

- **How long does the process take?**

For a nominal fixed fee we can assist with the process of obtaining a building permit, as well as a planning permit application if required.

We then pair you with our building partner, who will construct your new home within 6-9 months.

The builder is always appointed to the project at the very beginning, which confirms their availability, holds a space for your build and allows them to participate in the feasibility of the budget.

- **Who are your builders?**

We're launching with top master builders with whom we have long standing professional relationships, and who have built several of our prior projects. To grow our service areas we're always talking to new builders and are regularly touring them through our manufacturing facility to introduce them to the system.

- **Will my home be energy efficient?**

Of course, in line with the NCC every one of our homes will achieve a minimum 7 star rating, and each home is assessed and certified by an external sustainability consultant.

Thermal performance, integrity and sustainability is critical to all of our work, and every one of our project is designed with PassiveHaus principles.

- **Where are the panels made?**

In our manufacturing facility in Melbourne. Our floor, wall, roof panels and external structural glazing system is all made with renewable, sustainable Australian hardwood – including the insulation. and transported to site and assembled with the help of a crane.

ARCHIER —



FAQ.

- **Can you work with BAL40 or FZ sites?**

Yes, materials rated to BAL40 and FZ can be specified for sites with these BAL ratings. There may be a small additional fee for liaising with the local CFA for approval of the overall plan, which is a Council requirement.

- **How will we work together if I'm not in Melbourne?**

We're proficient in managing projects remotely. We always prefer to undertake a site visit to determine the optimal siting and orientation of the cabin.

- **Can I subdivide my land through this process?**

Yes, we can discuss this with you.

ARCHIER —

View to kitchen over island bench and dining space.



Thank you.

ARCHIER —

